



Innovative
parking and charging



RECARBOX

www.recarbox.com

The New Generation Garage

A lot of people would probably have switched to electric driving by now if they had access to a covered parking space and a private charging station.

- A lockable garage
- A wallbox for electric cars can be fitted inside the Recarbox
- Fits in any common parking space
- Does not require an official building permit
- Consists of recyclable and recycled materials

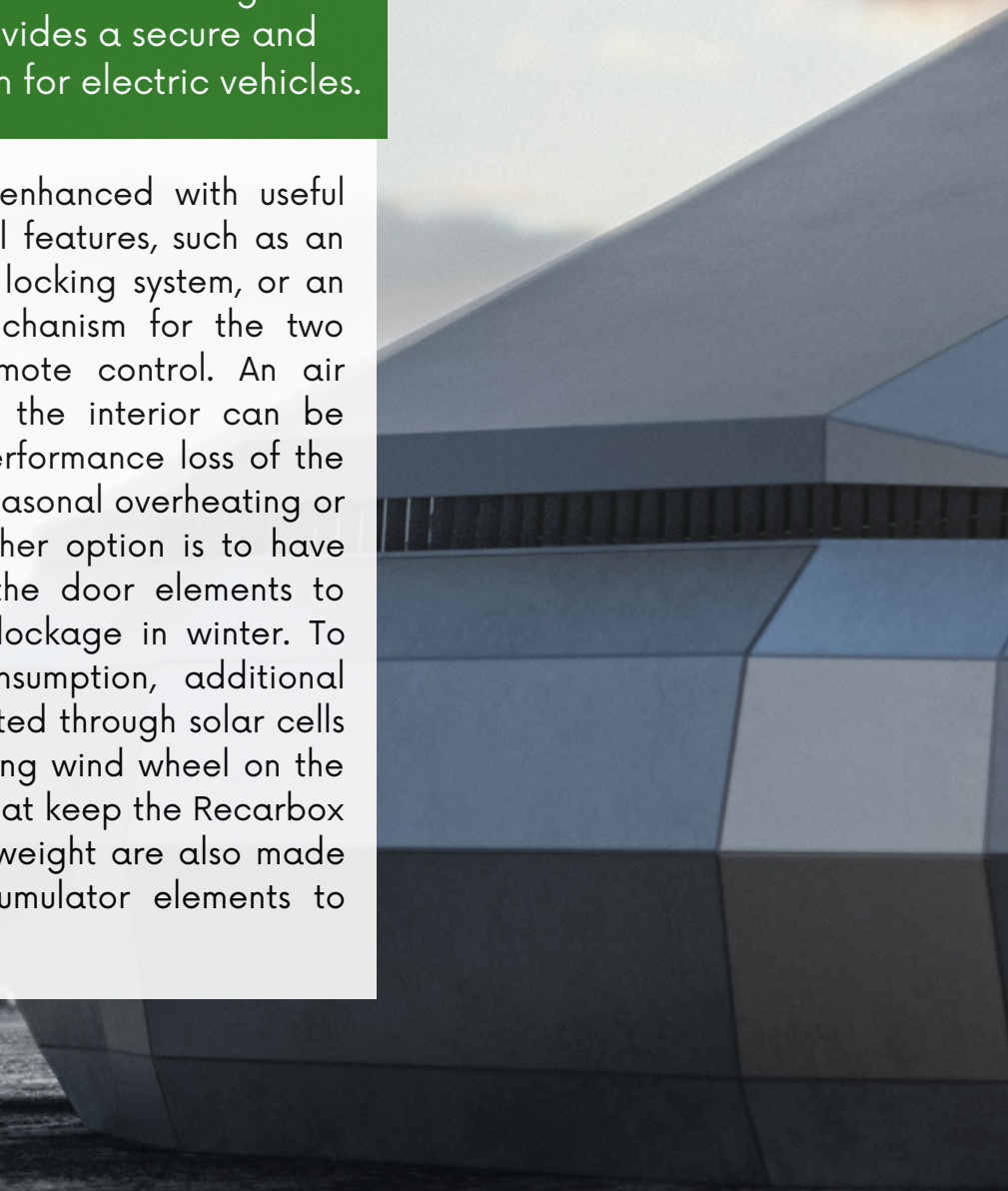


The Recarbox is a lockable garage innovation that is only slightly larger than the sheltered car.

This innovation enables the creation of lockable parking spaces for cars in urban residential areas and on other properties where it is usually not possible to build conventional garages due to limited space and construction opportunities. Even in cases where such constructions are possible, Recarboxes may be preferred over traditional garages or carports due to their minimal space requirements and lower costs. The Recarbox provides essential protection functions just like the conventional garage, such as protection against adverse weather conditions, damage, and theft. The Recarbox-principle - allowing the driver to enter the car from outside the Recarbox through the sliding side wall - can be made in various forms and sizes.

The Recarbox, equipped with an integrated charging station, provides a secure and private charging station for electric vehicles.

The Recarbox can be enhanced with useful and practical additional features, such as an alarm system, a central locking system, or an automated opening mechanism for the two door elements with remote control. An air conditioning system for the interior can be beneficial to prevent performance loss of the parked vehicle due to seasonal overheating or cold temperatures. Another option is to have selective heating for the door elements to prevent freezing and blockage in winter. To minimise electricity consumption, additional energy could be generated through solar cells and a horizontally rotating wind wheel on the roof. The wheel guides that keep the Recarbox grounded through their weight are also made of naturally heavy accumulator elements to store excess electricity.

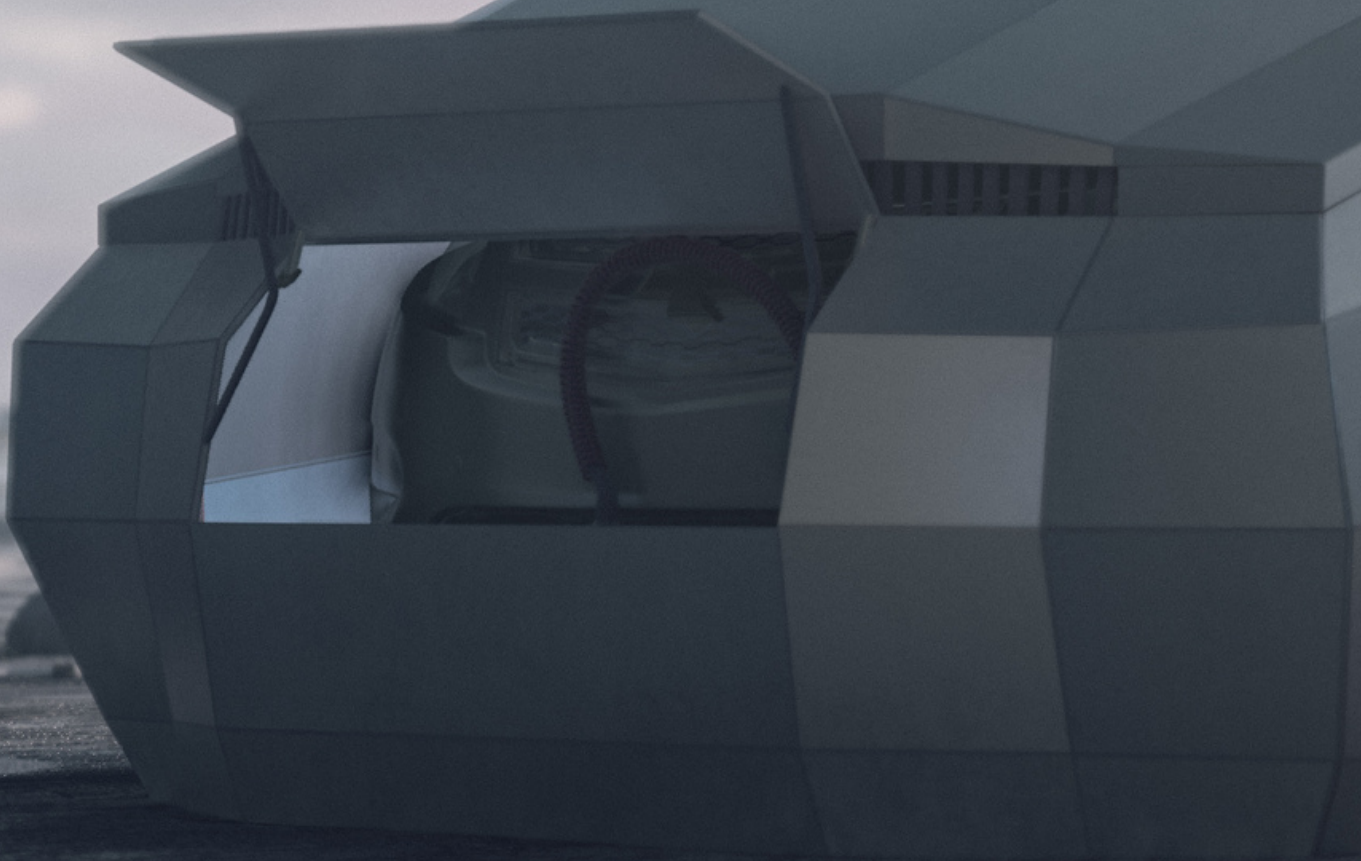


The Recarbox fits on any common parking space.

The space requirement of a Recarbox only exceeds the dimensions of the parked vehicle by a few inches. The secure entry is assured with the help of through guides on each side of the Recarbox and a chock.

The Recarbox does not require an official building permit due to its compact dimensions.

Without loss of substance, the Recarbox can easily be assembled and disassembled by two people. Permission to set it up would only need to be obtained from the owner of the respective parking space. The Recarbox can be secured and made storm-proof without damaging the ground surface. It does not require a firm underlying surface, it doesn't even need to be paved; it simply needs a sufficiently levelled surface.





The Recarbox is sustainable. It will be made of recycled and recyclable materials.

Manufacturers of environmentally-friendly plastic waste materials have developed excellent material properties for their products, which are ideal for the weather-resistance and stability of the Recarbox. For instance, recycled PET or bio-composite materials can be used to produce these components using injection molding technology. Another option is the use of aluminium, which is naturally recyclable, low-cost, and can be made heat-resistant with a coating.

Unlike traditional garages, the Recarbox is a low-cost solution.

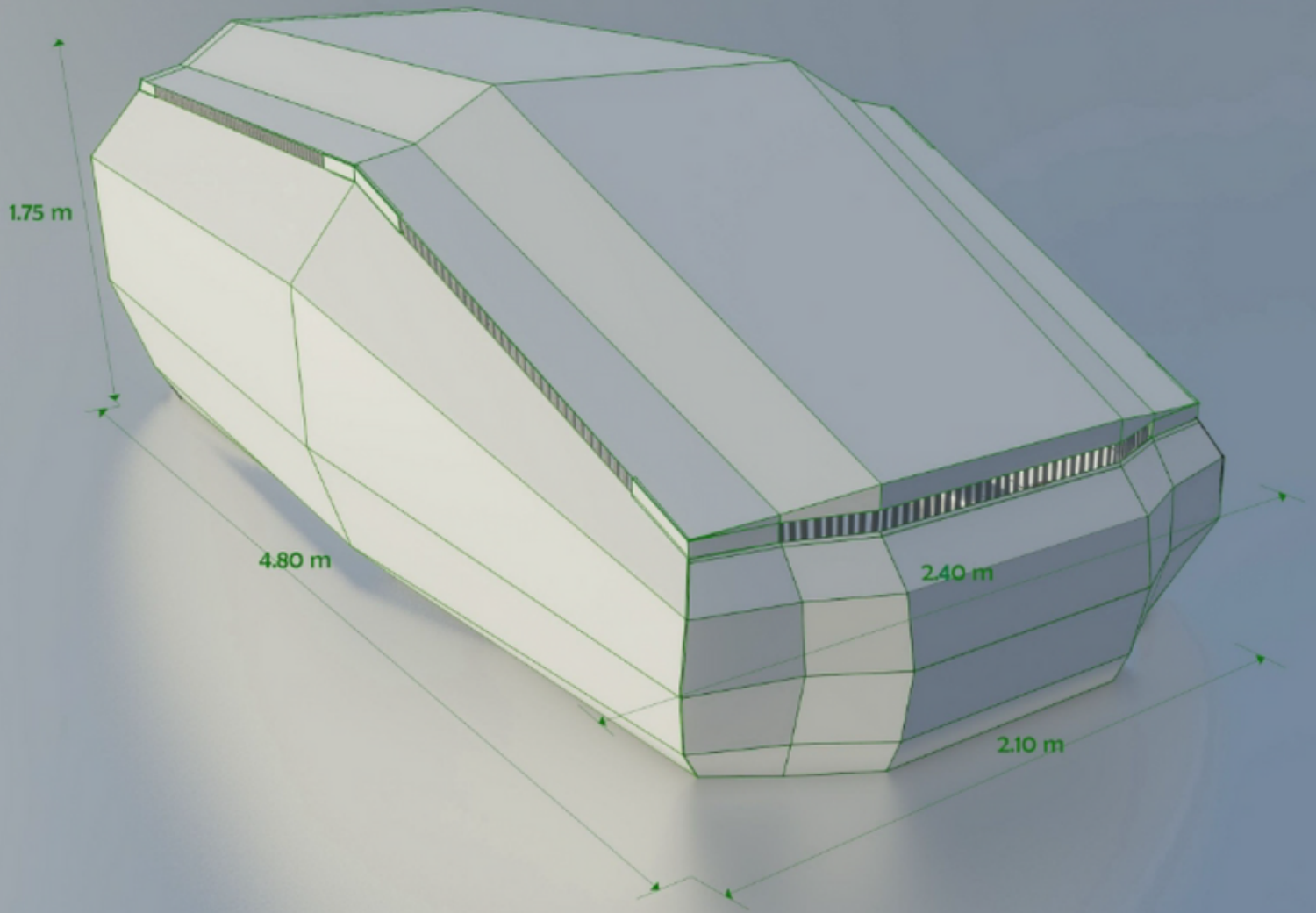
The production of the Recarbox requires significantly less material than a walk-in garage. Additionally, its material composition is highly cost-effective ensuring the necessary protection against snow, hail, tree sapping, autumn leaves, bird droppings, over-heating, icing, dust, damage, and theft. Installing the Recarbox is straightforward and does not necessarily require professional assistance.

The cost-effectiveness and profitability of a Recarbox go beyond its affordable purchase price alone.

Landlords and agencies can generate additional income with a lucrative cost-benefit ratio by renting out Recarboxes. The same applies to other providers of outdoor parking spaces, such as hotels, airports, seaports, park-and-ride facilities, amusement parks, and various major cultural and sports events. Car manufacturers and dealers can use the Recarbox as a means of customer retention and promotion, as it can be enhanced with appropriate designs and brand logos. Moreover, it may encourage some car buyers to opt for a higher-value vehicle, which they may not have chosen with an open-air parking space. Outdoor advertising companies can place their advertisements on highly visible parking spaces with Recarboxes, benefiting both the advertisers and Recarbox owners. Hardware stores, auto accessory retailers, and garage brokers can explore an additional business field by distributing, delivering and providing repair services for Recarboxes. Car insurers will offer lower comprehensive insurance premiums, as they would for any garage-kept vehicle.



Dimensions of the Recarbox for average-sized cars



Are you interested in the market launch, production, or distribution of the Recarbox?

Contact us:

Recarbox Point
Glasgow | Berlin

Elisa Szesny

mail@recarbox.com
+44 7846100286

